



Gold Bias Christmas Tree



Approx. finished size: 28cm by 48cm
By Valerie Nesbitt

Fabrics requirements:

1 Fat Quarter for background
1 Fat 1/8th for Tree
30cm Calico for backing
Wadding approx. 30cm by 50cm

Workshop Notes

This is a very simple design; you need to trace off the 4 templates onto Heat 'N Bond (or another fusible web) - I have added a small extension so that you can be sure to under/overlap each piece. Although I have suggested a size for the background, you can fuse this onto any size background you like.

- Cut these traced shapes out roughly and fuse onto the back of your chosen fabrics.
- Cut out accurately
- Remove the paper backing (if applicable) and fuse your tree onto your backing fabric overlapping the various sections until you get to the top.

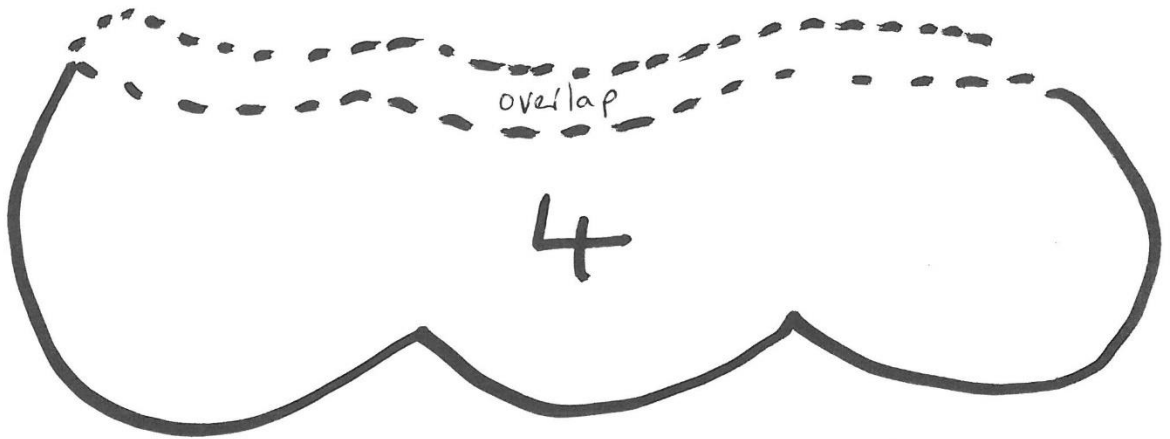
NOTE: if you have an appliqué mat you can do this before peeling the whole tree off and adding to your background.

- Once fused you can shape the bottom of the rectangle: gently fold work in half vertically; measure up from the bottom until you get the angle you like and draw/cut into shape – make sure your ruler is on your work so that you only draw/slip into the spare cutaway fabric.
- Add fusible gold clover bias
- Layer backing and wadding and fast turn.

(if you need reminder of this you lay the wadding down first, the backing right side up and then the project right side down; sew all the way round BUT leave an opening – suggest if you have a pointed bottom(!) that this is left at the top which will be a straight edge) – if you want to add hanging loops now is the time to do it: add them along the top edge remembering that they need at this stage to hang DOWN into the work). Turn through and stitch the opening closed.

- Add some stitching in the background if you wish; add charms/beads and other embellishments to suit. The gold bias on my sample has not been sewn and has survived for several years!
- Add some form of hanging – ribbons or similar will work fine as this is very light –there are some lovely quilt hangers on the market too.

© 2010 Valerie Nesbitt



Templates for Gold Bias Tree
© Valerie Nesbitt 2010

